



Telephone: 01200 442 655 Mobile: 07960 737 881

Unit 4c, Salthill Industrial Estate, Lincoln Way, Clitheroe, Lancashire BB7 1QL



# Signtec - making the right impression for your business.

Whatever type of signs your business needs, Signtec delivers them. For vehicles, we cover the full range of everything you might want, from a logo for a single van through to full fleet liveries on 44 tonne artics.

For other types of businesses, the Signtec service is equally impressive. From providing initial design ideas, we can then produce every type of sign imaginable from shopfront identities to totem signs, illuminated signs, pavement signs, magnetic signs .....the list is almost endless.

As part of the Clitheroe-based Steadplan Group, Signtec has all the resources and commitment to service that guarantees your job will be delivered on time, on cost and to the highest possible quality.

Signtec  
Showing the Way



## Service, Professionalism, Quality

**Signtec offers a full service, from initial design ideas through to finished installation. Speed of delivery is also important, with most jobs being completed within 14 days.**



Signtec's clean, bright and spacious premises are purpose-built for the job, so that even full length trucks and trailers can easily be accommodated indoors.

As an added advantage, Steadplan's paintshop facility is right next door, so that complete new liveries can be applied quickly, easily and to the highest possible standards.



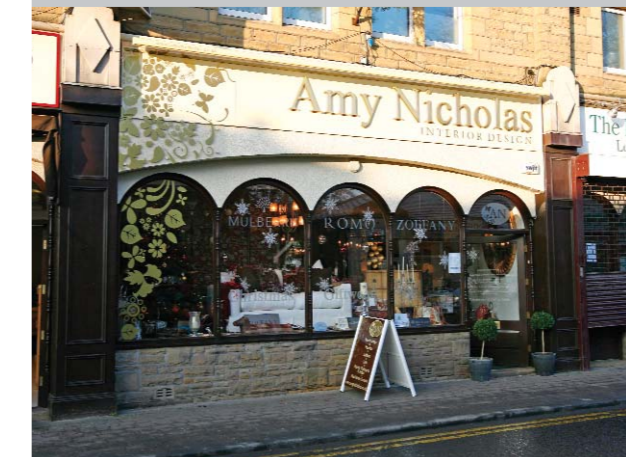
### Choose Signtec for:

- A complete sign service for all types of business
- Full design and installation
- The widest range of signage products
- Unrivalled facilities and standards
- Top quality vinyls for vans, trucks and trailers
- Signs that are ideal for buildings, shops and retail businesses
- Speedy, high value and cost-effective service

## Case Studies

### The Retailer

When Amy Edmondson decided to open her interior design shop in Barrowford, she came to Signtec to really give her business that shopfront sparkle!



*"We were opening just a few weeks before Christmas, so time was of the essence"*

says Amy, adding that:

*"Signtec's service was spot-on for timing, quality and value - meaning that the shop was able to fully capitalise on highly important seasonal shopping".*

### The Garden Centre

Having grown rapidly to become the area's principal garden centre, Shackletons of Chatburn needed to progress its image beyond their customers normal expectations.

***"For us, the standard lettered-up van was too commonplace"***

says owner Dave Shackleton:

***"What we really needed was a much stronger graphic presence, with large wrap vinyls. Signtec came up with the right solution straight away - now we are really getting our message across!"***



### The Big Truck Fleet

Now part of the Bakkavor Group, Hitchen Foods needed to re-livery their truck and trailer fleet with the minimum of delay and downtime.



*"We chose Signtec for the job because they have the facilities, the experience, and the service"*

says distribution manager Dave Southern:

*"In particular, their ability to repaint our trailers on the same site immediately prior to applying the new vinyls was a valuable plus point in terms of speed of service, minimising downtime and generating the best possible corporate image."*